

History of Garrett County in Maps

A NON-LINEAR AND NON-COMPLETE STORY ABOUT GARRETT
COUNTY TOLD THROUGH CARTOGRAPHY

Chris Nichols



Wednesday February 7, 2024

*Joan Crawford
Lecture Series*

Garrett College,
McHenry MD

In the beginning . . . There was rock, and lots of it
“The rocks which form the surface of Garrett County are entirely of the class known as sedimentary or clastic – that is, they represent deposits of material derived from the destruction of older rocks and laid down by moving water” –

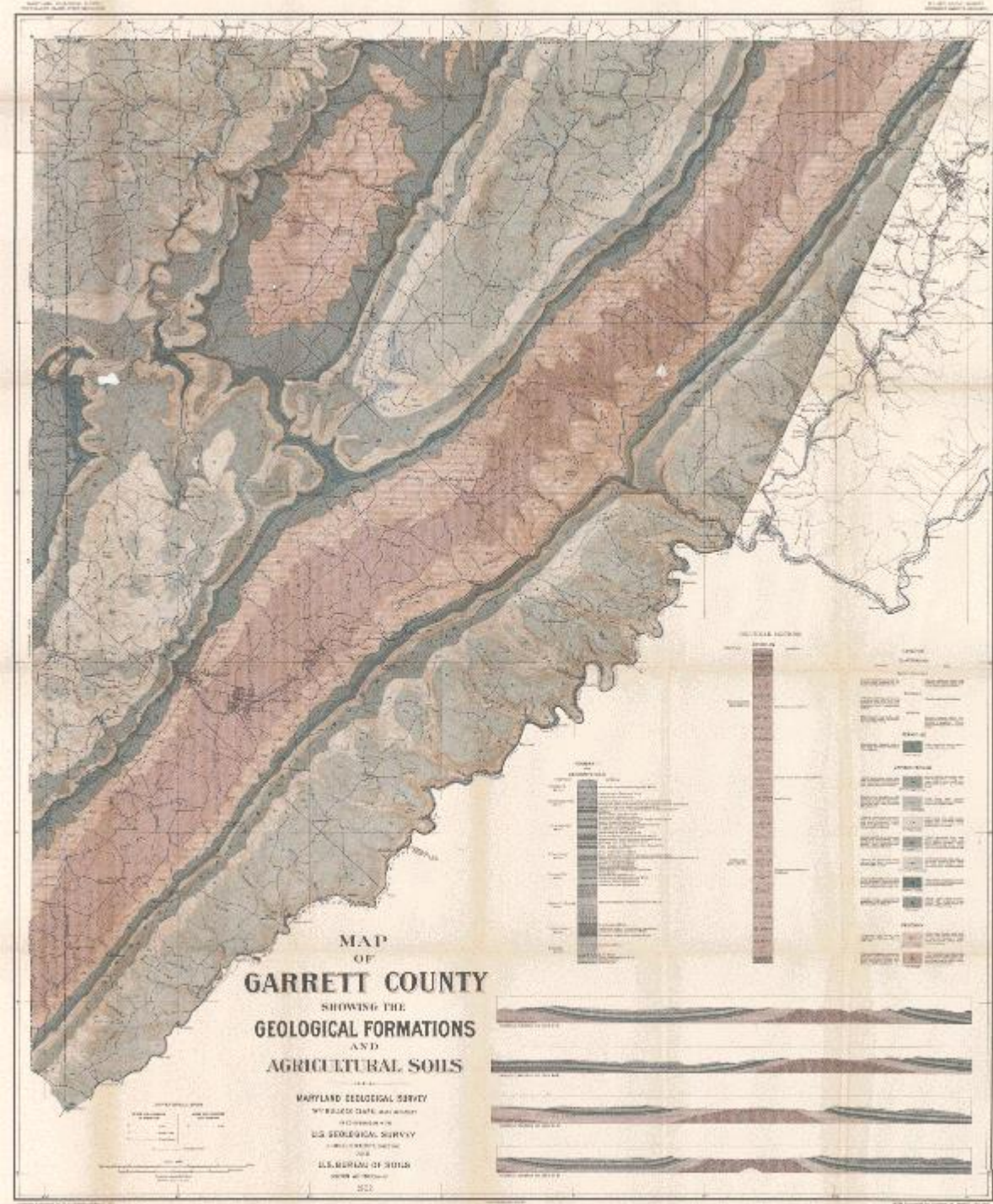
George Curtis Martin, The Geology of Garrett County, Johns Hopkins Press 1902

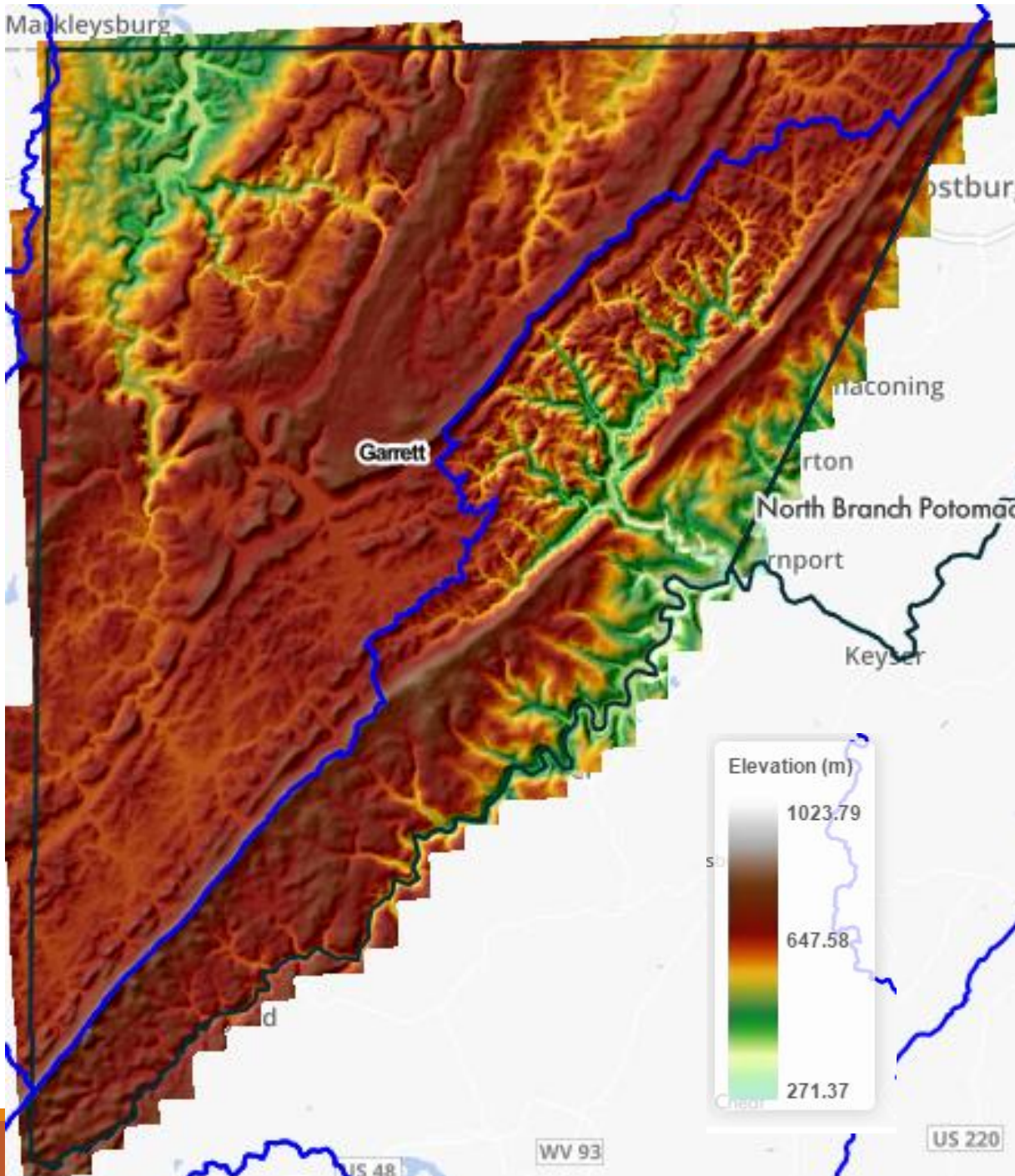


During the Carboniferous Period, appx 300 million years ago, conceptual representation,

<https://dinosaurpictures.org/ancient-earth#240>

300,000,000 BCE

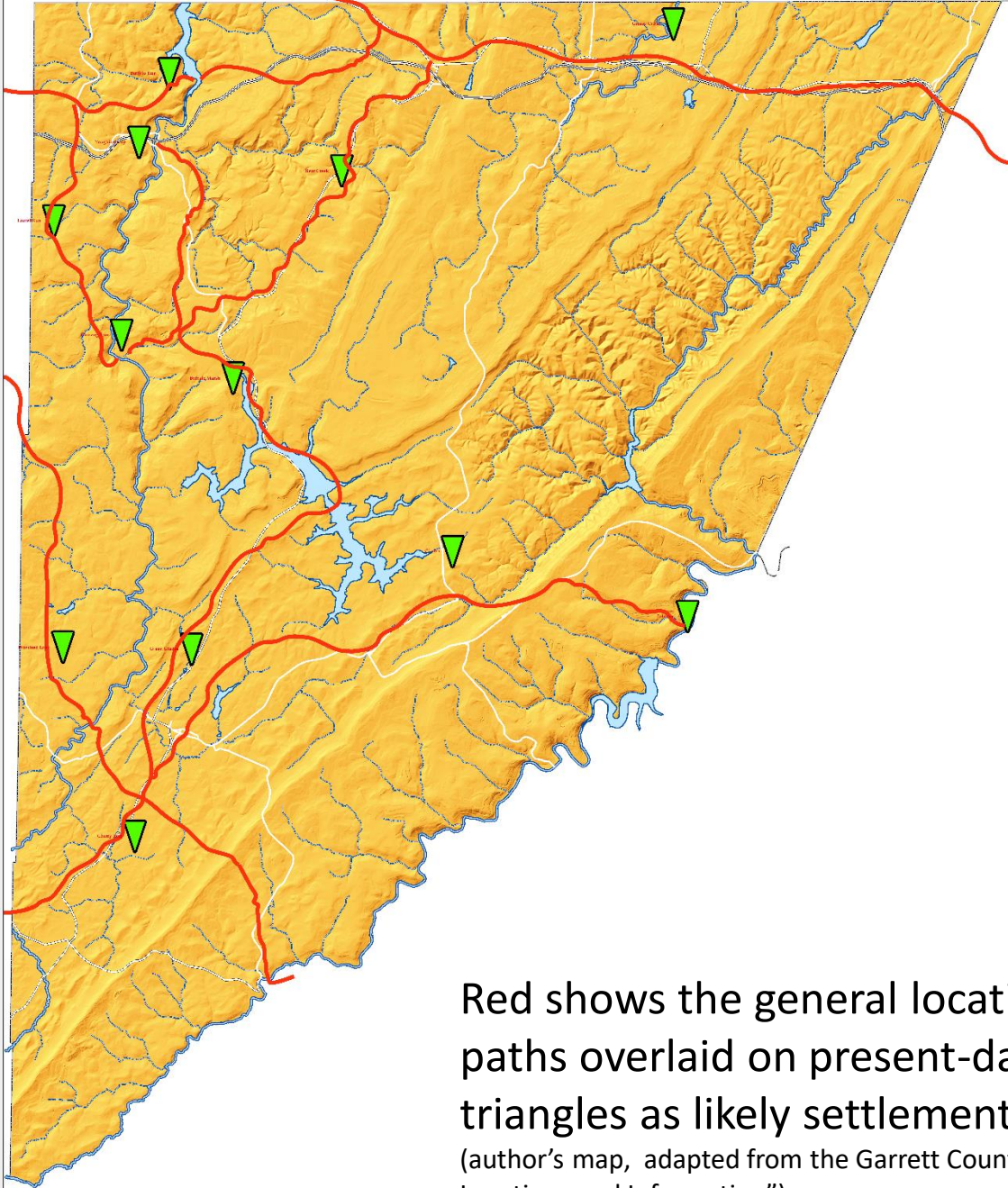




Most of Garrett County really is “Western” as far as hydrology is concerned

Garrett County topography from The State of Maryland LiDAR initiative
<http://imap.maryland.gov/Pages/lidar-topography-viewer.aspx>

Trails and settlements of indigineous peoples



Indigenous Peoples' Presence

These lands were originally settled and traversed by peoples such as the Massowomeck, Monongahela Culture, Shawnee Indian Tribe, and others who were driven away by European settlers

Red shows the general location of major trails and paths overlaid on present-day roads with green triangles as likely settlements

(author's map, adapted from the Garrett County Historical Society's "Map of Historical Locations and Information")

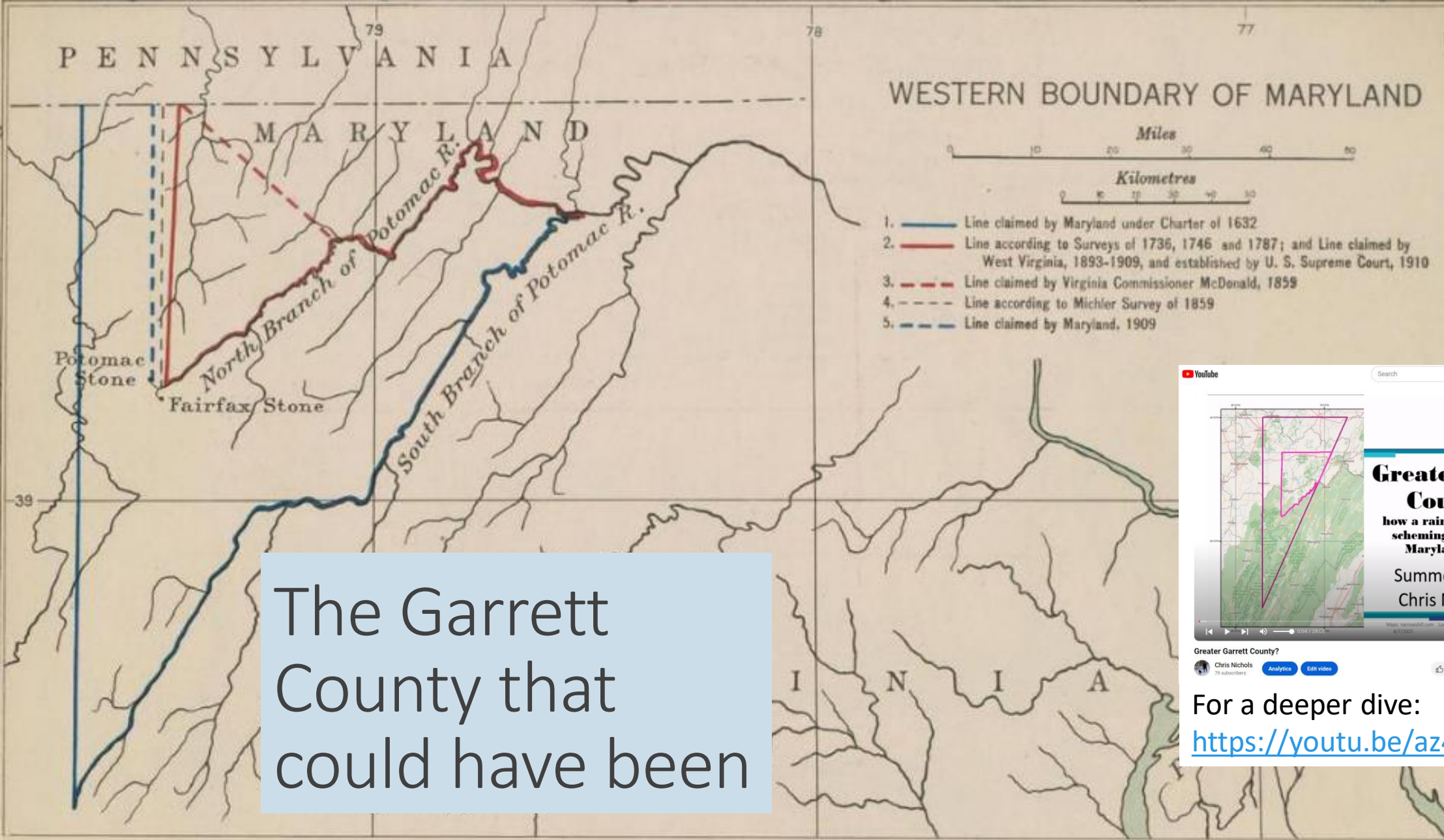
10,000BCE -1700s

Filling in the blank areas . . . Western Maryland in 1775

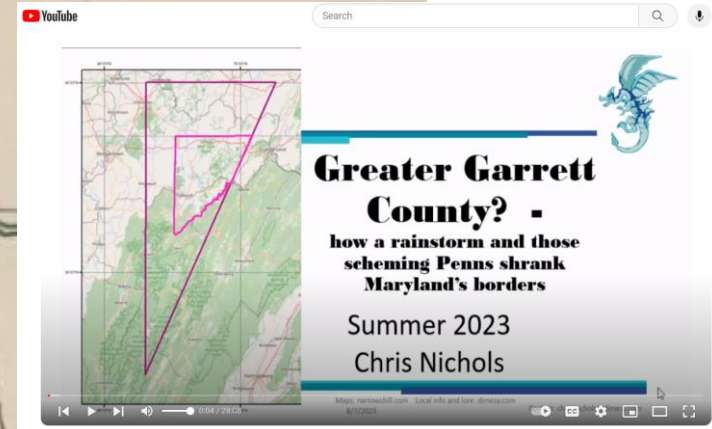


A Map of the most Inhabited part of Virginia containing the whole province of Maryland with Part of Pensilvania, New Jersey and North Carolina. Drawn by Joshua Fry & Peter Jefferson in 1775. Printed for Robt. Sayer ... London. (Northern Section)

<http://www.davidrumsey.com/luna/servlet/detail/RUMSEY~8~1~1916~120022:Map-of-the-most-Inhabited-part-of-V?&qvq=w4s:/where%2FMaryland;lc:RUMSEY~8~1&mi=34&trs=373>

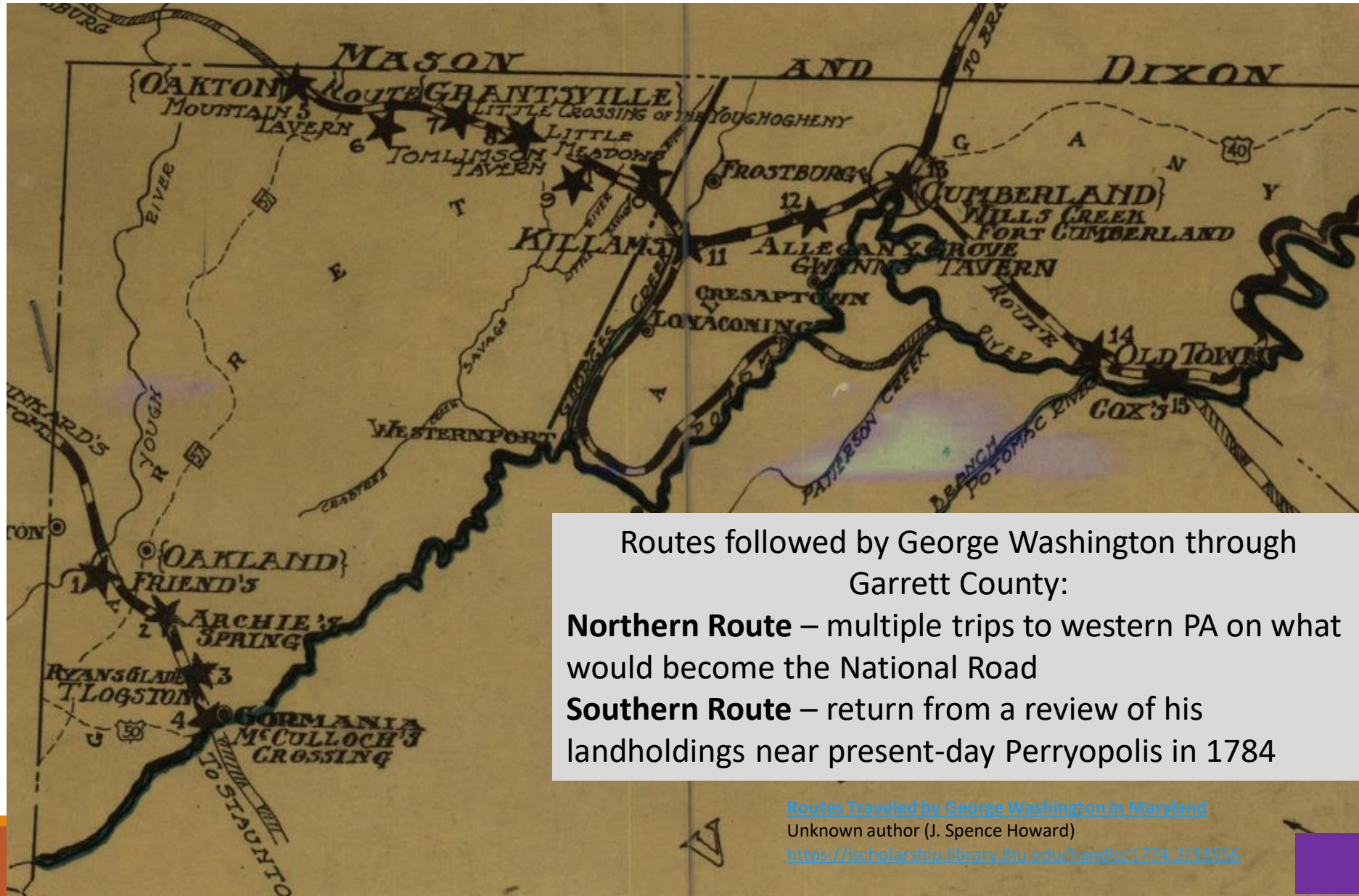


The Garrett County that could have been



For a deeper dive:
<https://youtu.be/az470PrXfys>

George Washington slept . . . Here?



Routes followed by George Washington through
Garrett County:

Northern Route – multiple trips to western PA on what
would become the National Road

Southern Route – return from a review of his
landholdings near present-day Perryopolis in 1784

[Routes Traveled by George Washington in Maryland](#)

Unknown author (J. Spence Howard)

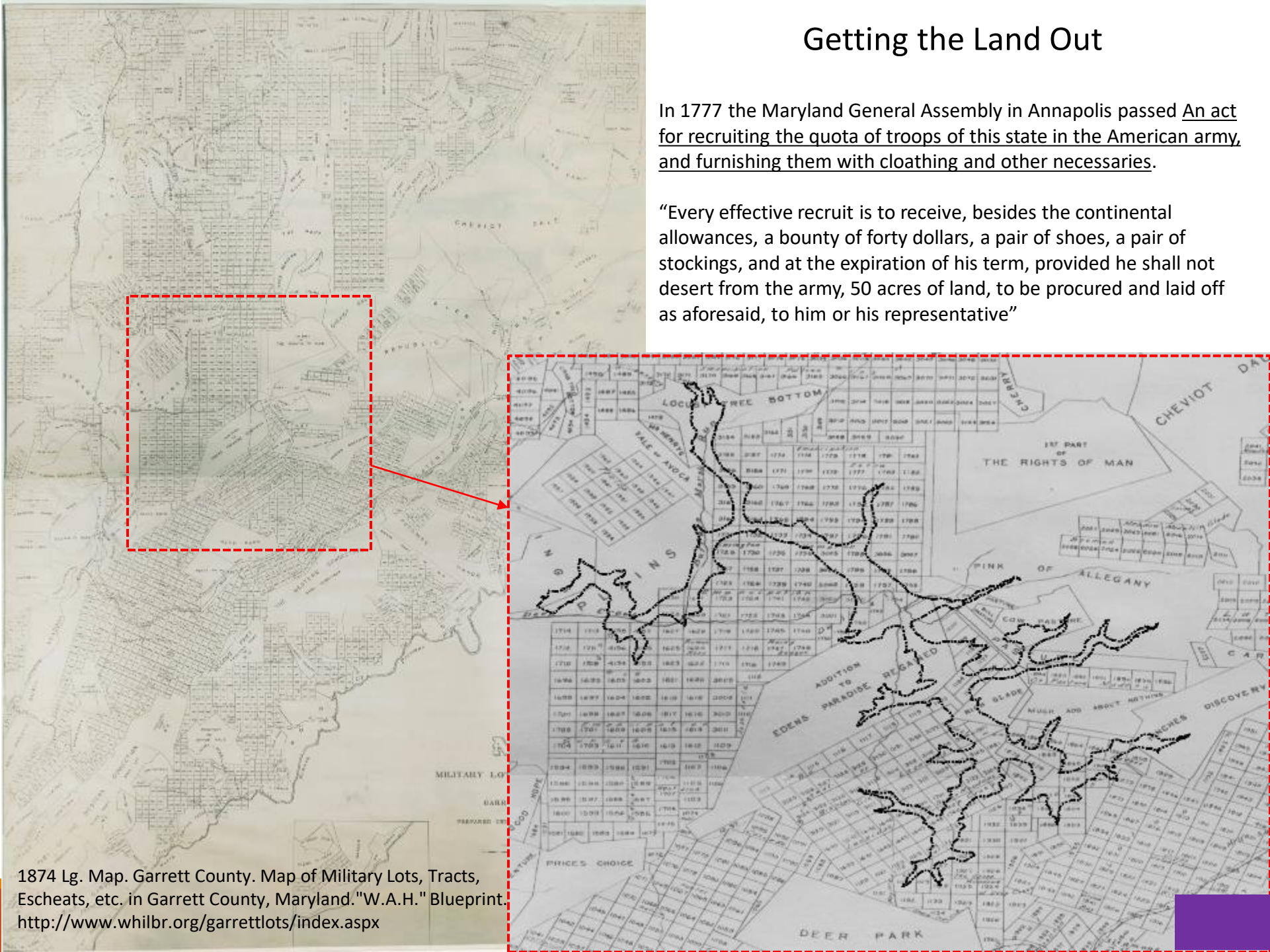
<https://jhu.scholarship.library.jhu.edu/handle/1774.2/33556>

1754- 1784

Getting the Land Out

In 1777 the Maryland General Assembly in Annapolis passed An act for recruiting the quota of troops of this state in the American army, and furnishing them with cloathing and other necessaries.

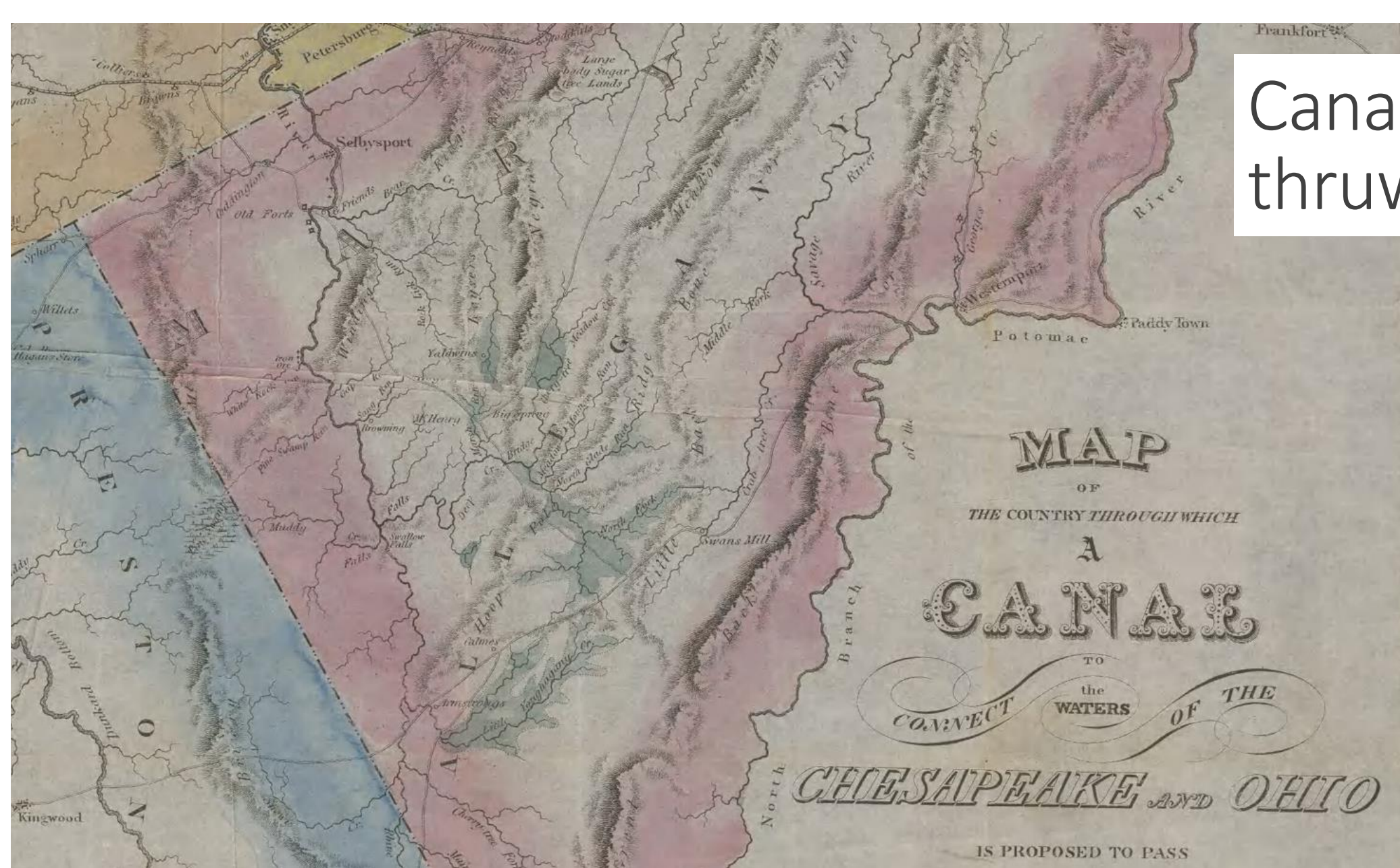
“Every effective recruit is to receive, besides the continental allowances, a bounty of forty dollars, a pair of shoes, a pair of stockings, and at the expiration of his term, provided he shall not desert from the army, 50 acres of land, to be procured and laid off as aforesaid, to him or his representative”



1874 Lg. Map. Garrett County. Map of Military Lots, Tracts, Escheats, etc. in Garrett County, Maryland. "W.A.H." Blueprint. <http://www.whilbr.org/garrettlots/index.aspx>

Canal thruway?

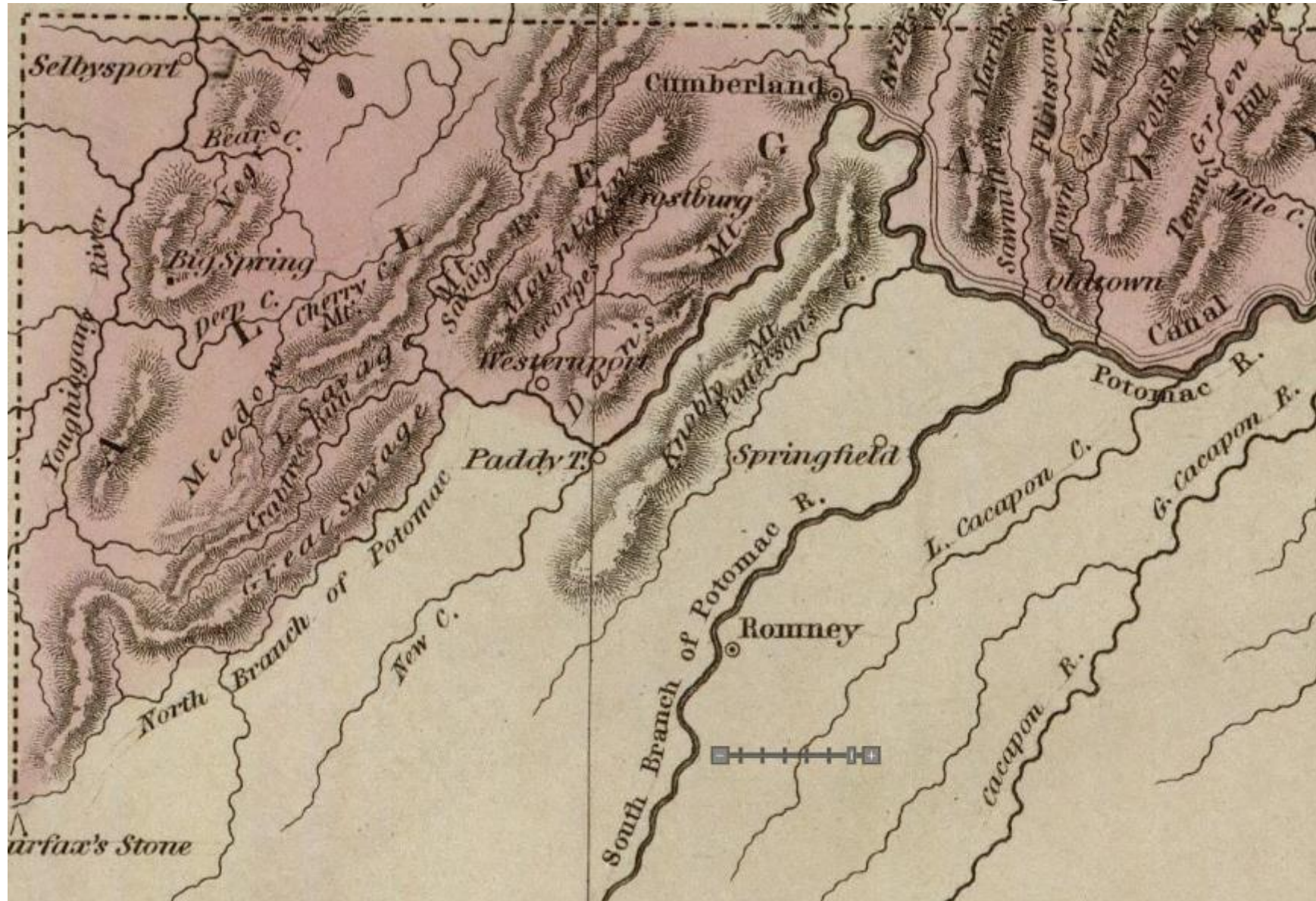
What would become Garrett County was studied for a route to continue the C&O canal in 1824. The envisioned flooded area vaguely matches Deep Creek Lake



Pioneer Era: Meshach Browning's Hunting Ground

Through the mid 1800s, what would become Garrett County was still largely a wildland.

Selbysport, the first official town west of Cumberland, is the only town on this map.



Dimesy's Domain
The online attic for Chris Nichols

Garrett County in the times of Meshach Browning

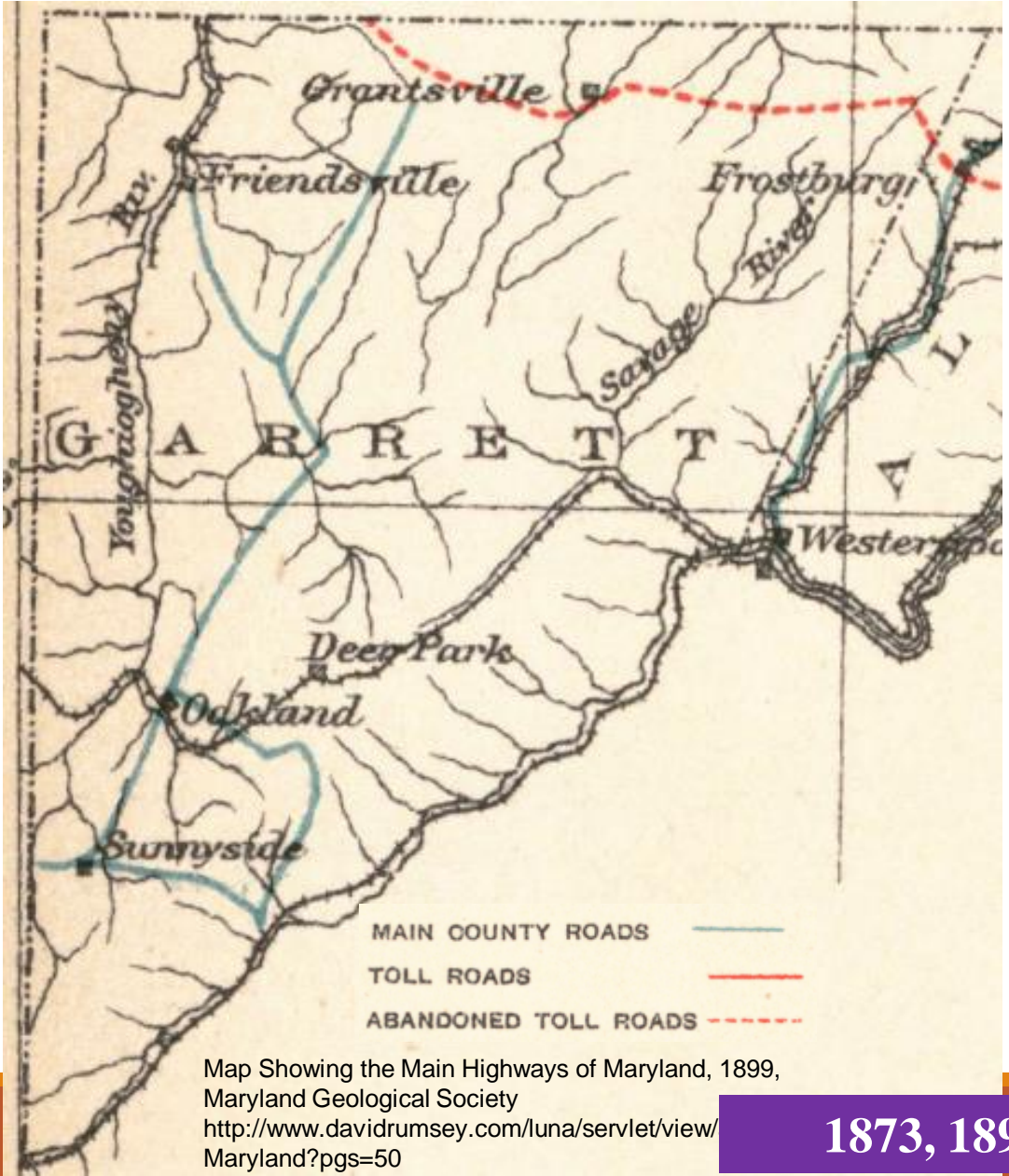
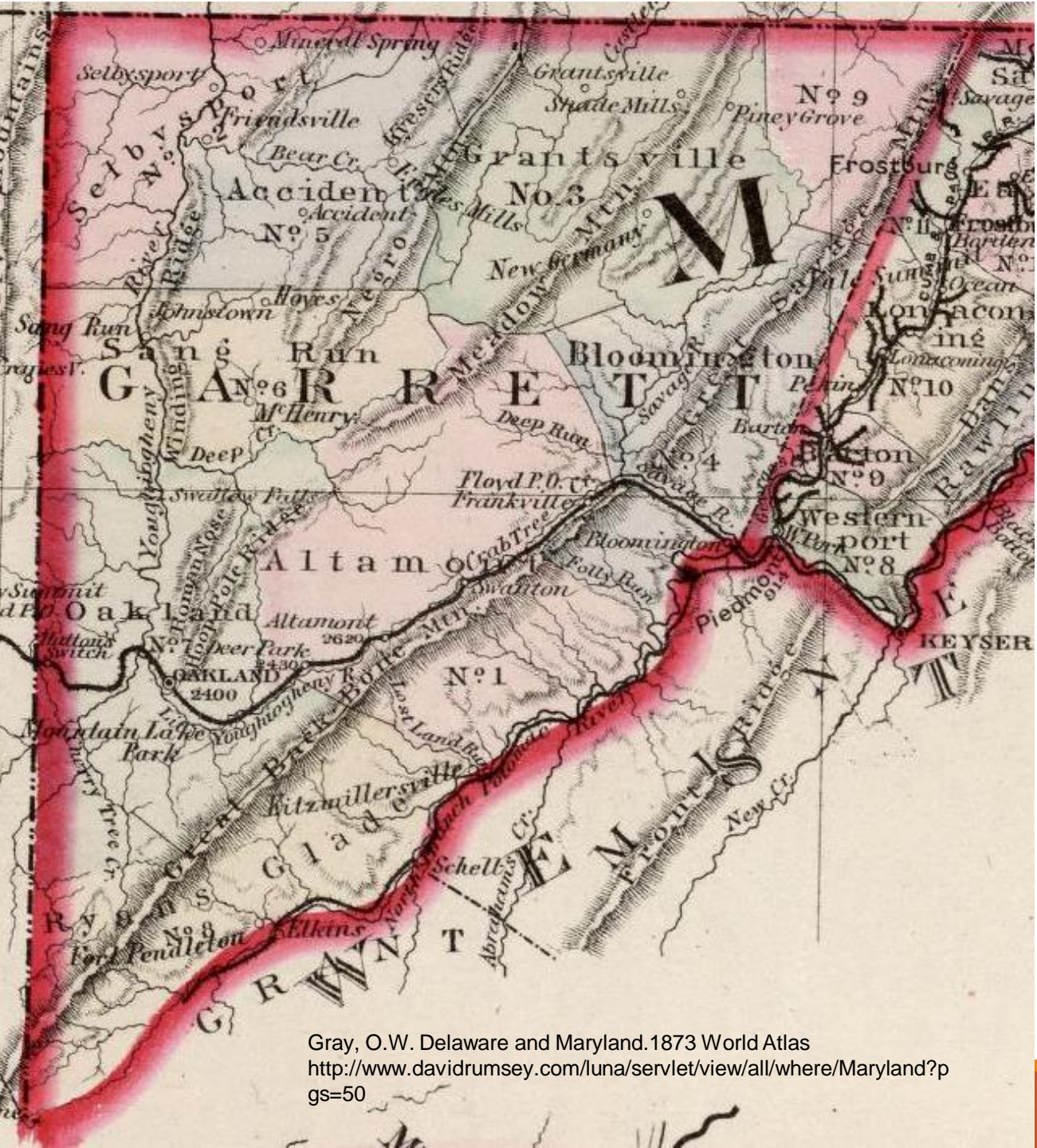
▲ Narrows Hill ● September 27, 2022 ■ Deep Creek Lake, Garrett County, History

Deep Creek (Lake) in the time of Meshach Browning

For a deeper dive:

<https://dimesy.com/2022/09/27/garrett-county-in-the-times-of-meshach-browning/>

Forming a new county and getting around in it

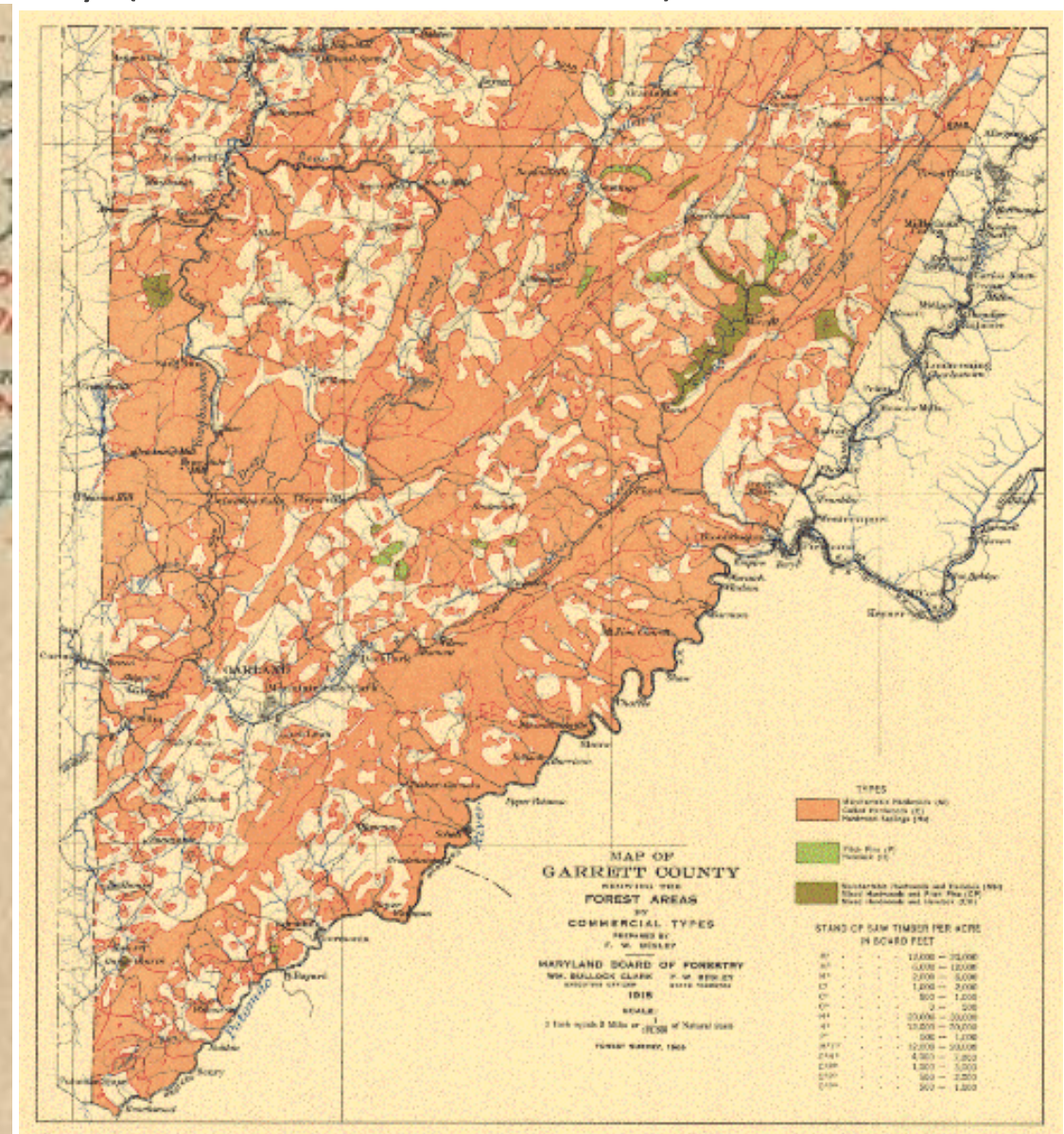
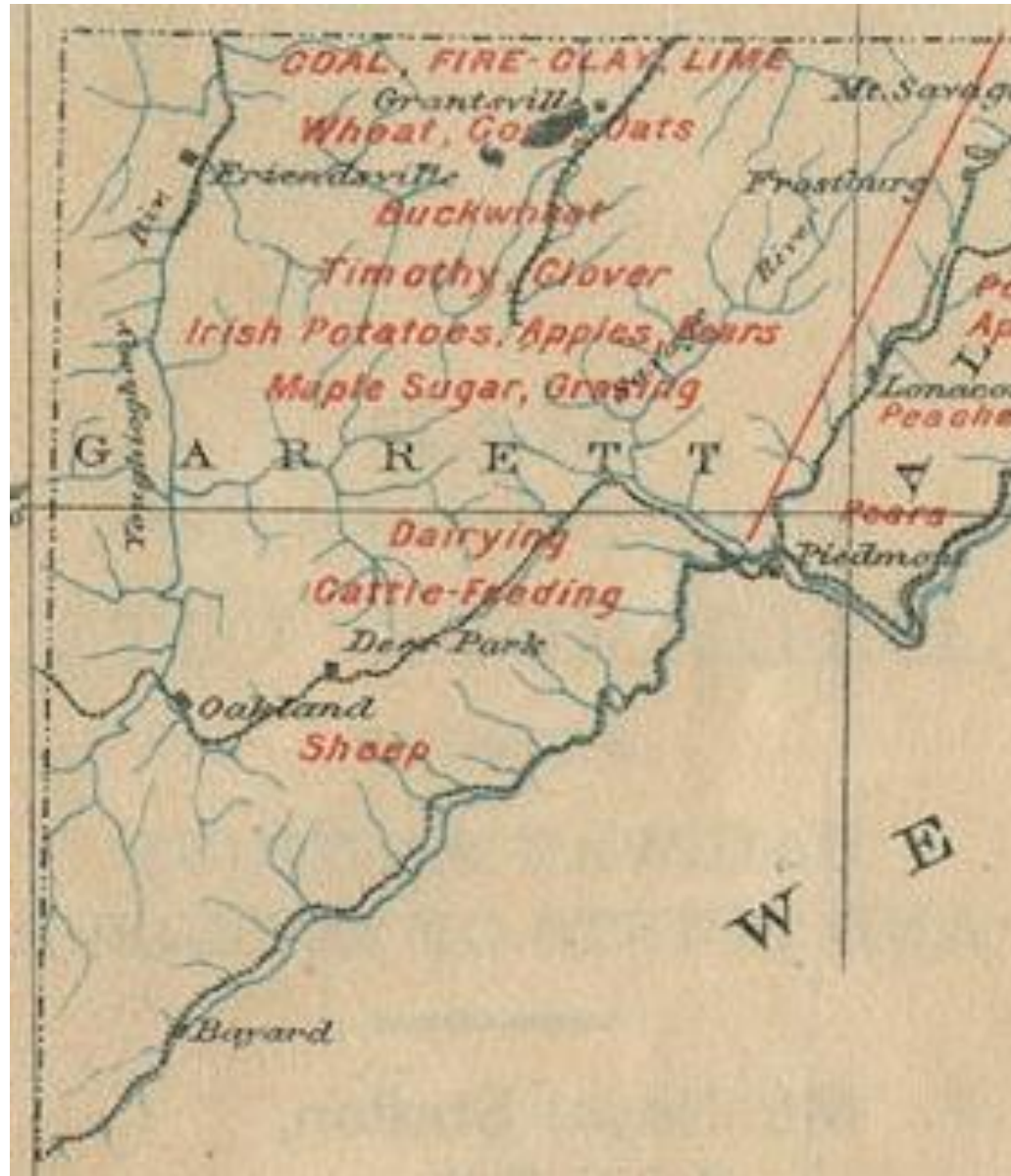


Gray, O.W. Delaware and Maryland. 1873 World Atlas
<http://www.davidrumsey.com/luna/servlet/view/all/where/Maryland?pgs=50>

Map Showing the Main Highways of Maryland, 1899,
Maryland Geological Society
<http://www.davidrumsey.com/luna/servlet/view/Maryland?pgs=50>

1873, 1899

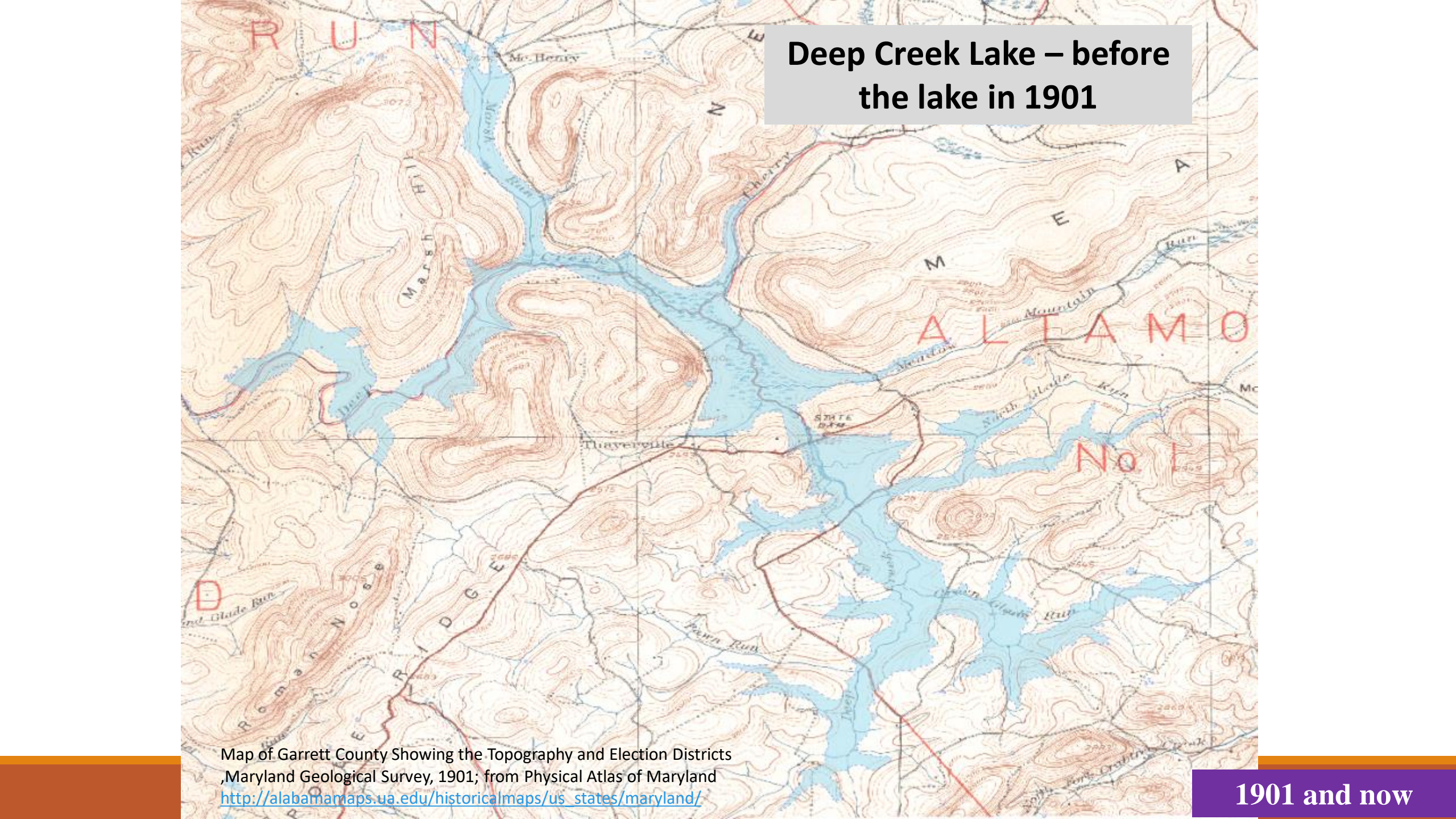
The land of milk and honey (or stones and trees)



Map of Maryland showing Resources by County, C.1902
<http://www.lib.umd.edu/mdmap/NoDate/map-of-maryland-showing002>

Map of Garrett County showing forested areas, 1918
http://alabamamaps.ua.edu/historicalmaps/us_states/maryland/

1902, 1918

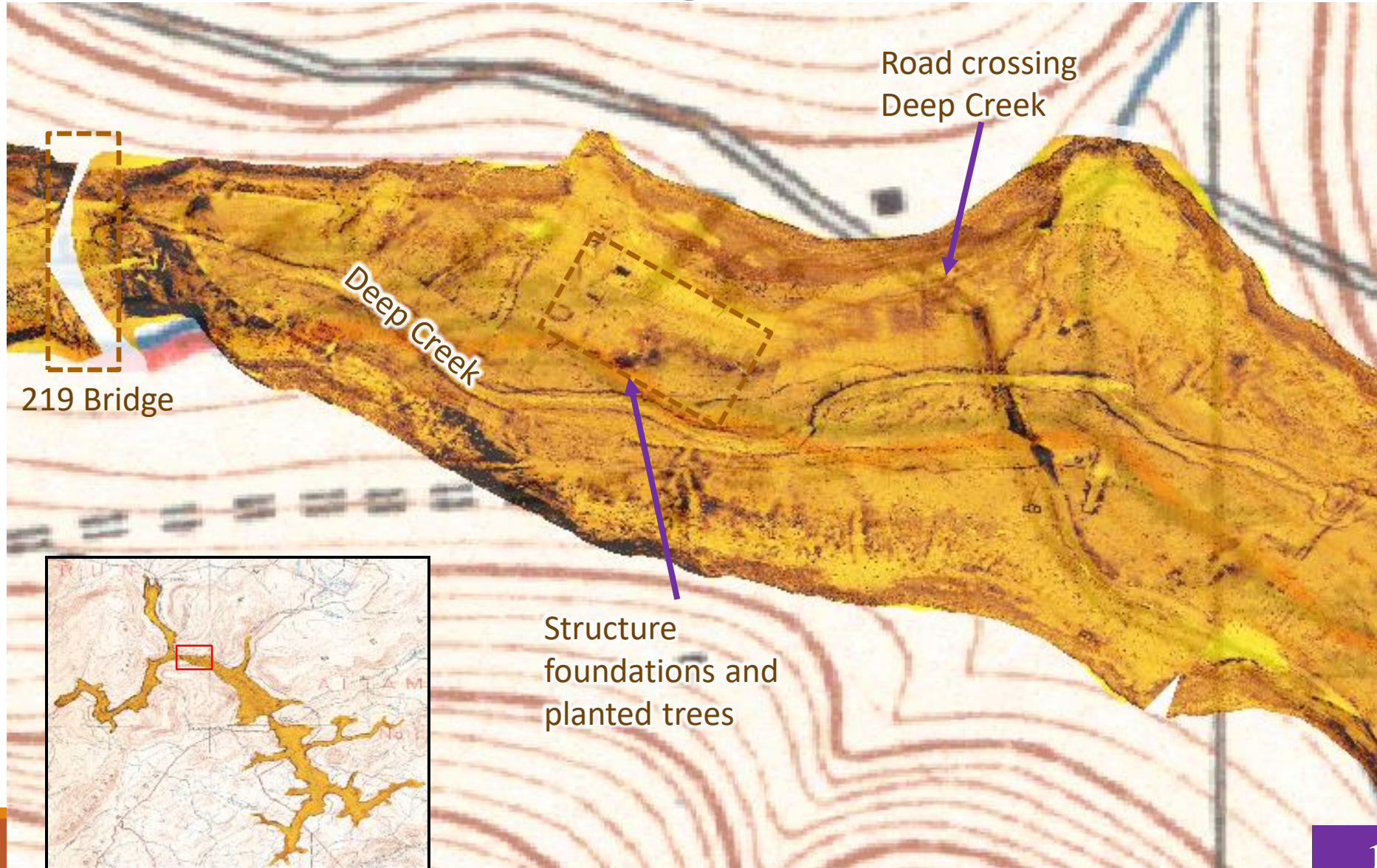


Deep Creek Lake – before
the lake in 1901

Map of Garrett County Showing the Topography and Election Districts
,Maryland Geological Survey, 1901; from Physical Atlas of Maryland
http://alabamamaps.ua.edu/historicalmaps/us_states/maryland/

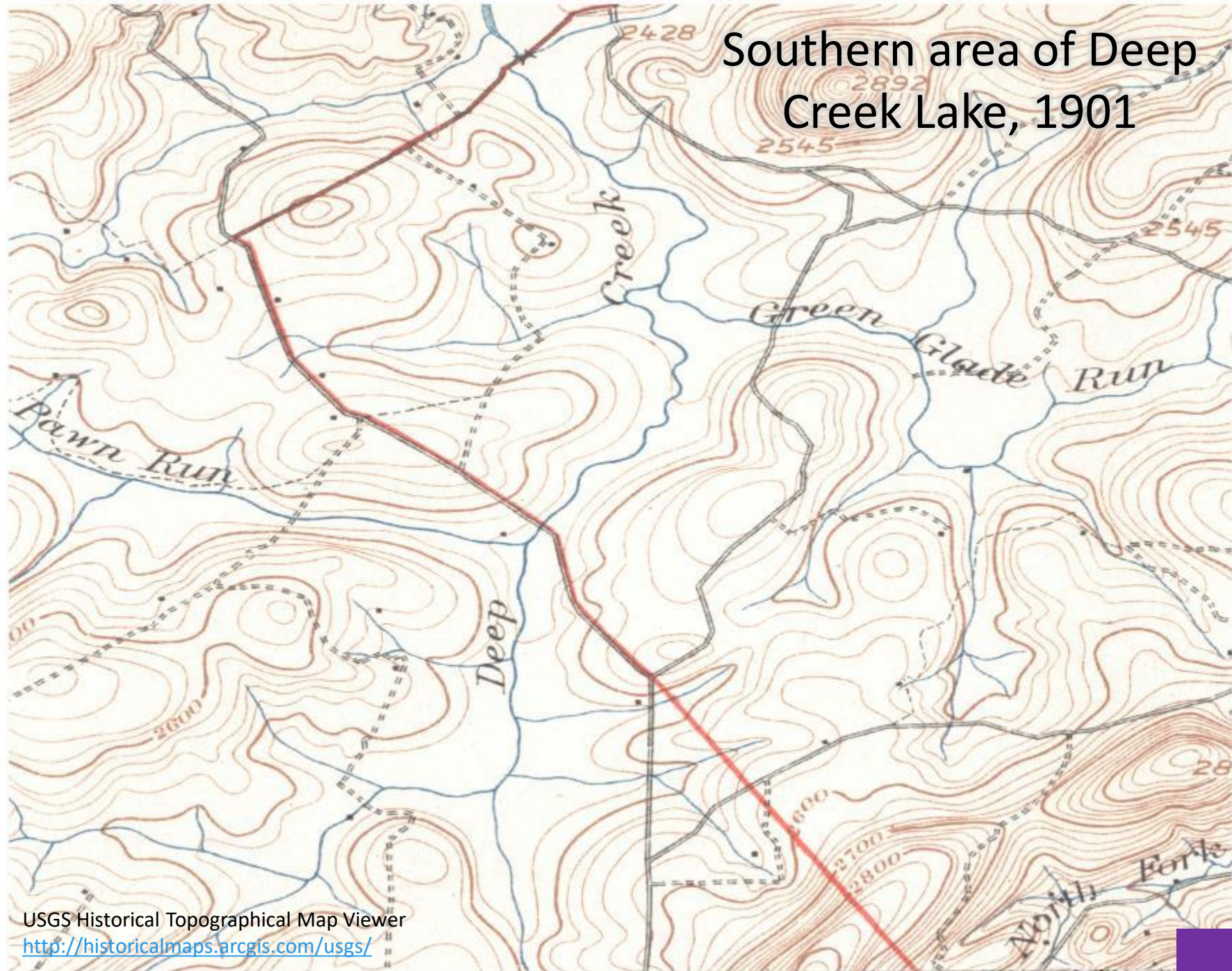
1901 and now

What's lurking under the lake?



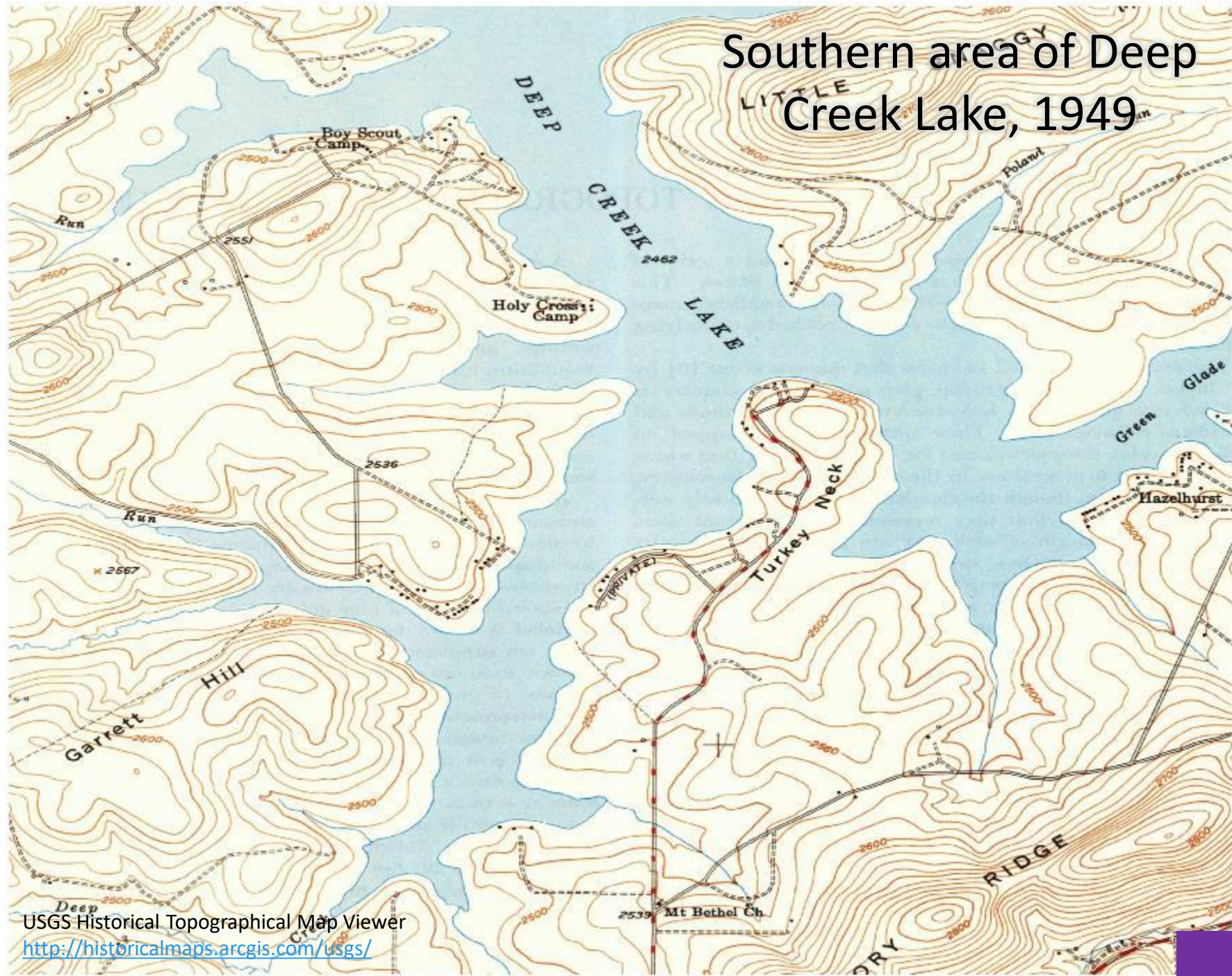
For a LITERAL deeper dive!
<https://dimesy.com/deep-creek-lake-then-and-now-map>

Southern area of Deep Creek Lake, 1901



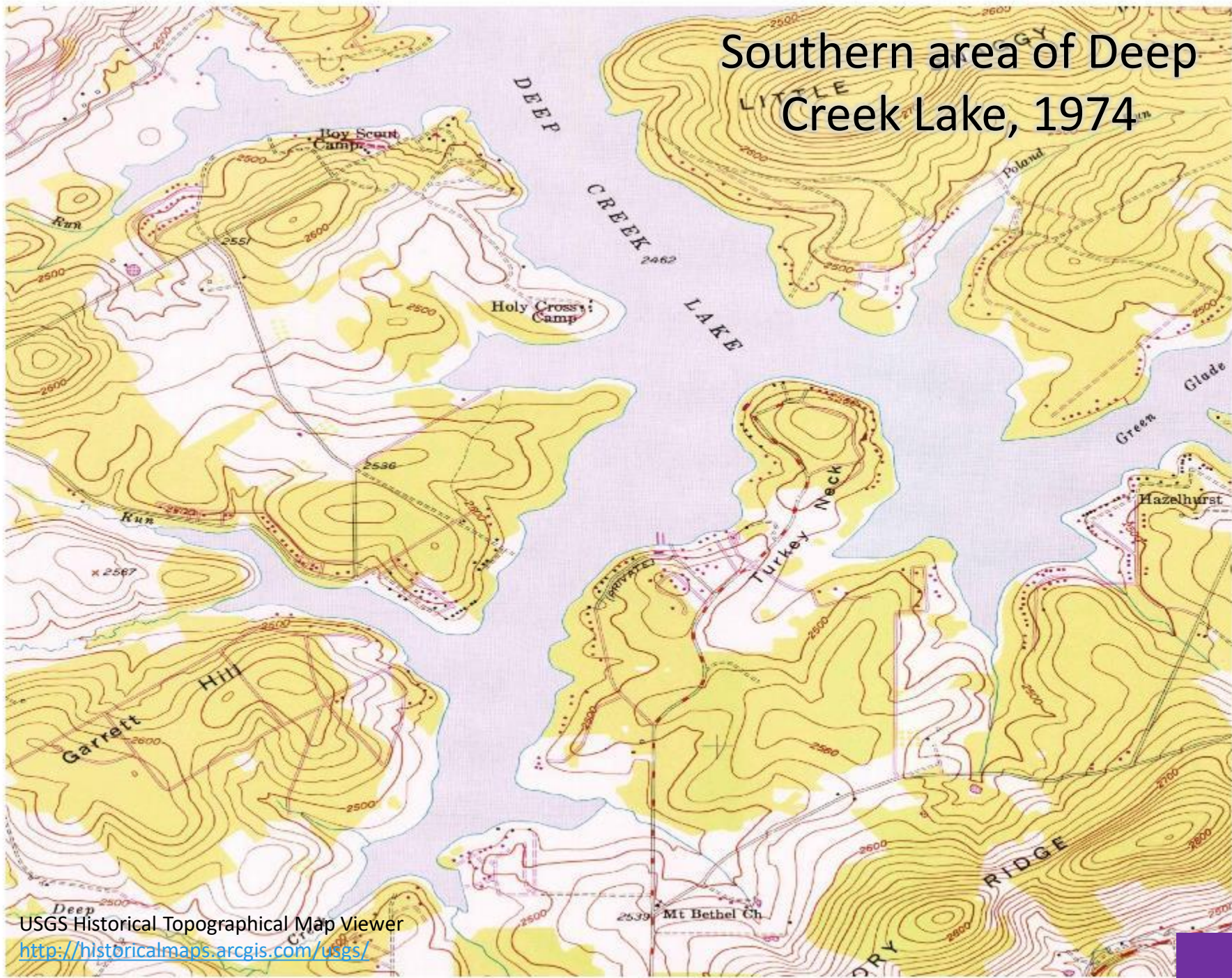
USGS Historical Topographical Map Viewer
<http://historicalmaps.arcgis.com/usgs/>

Southern area of Deep Creek Lake, 1949



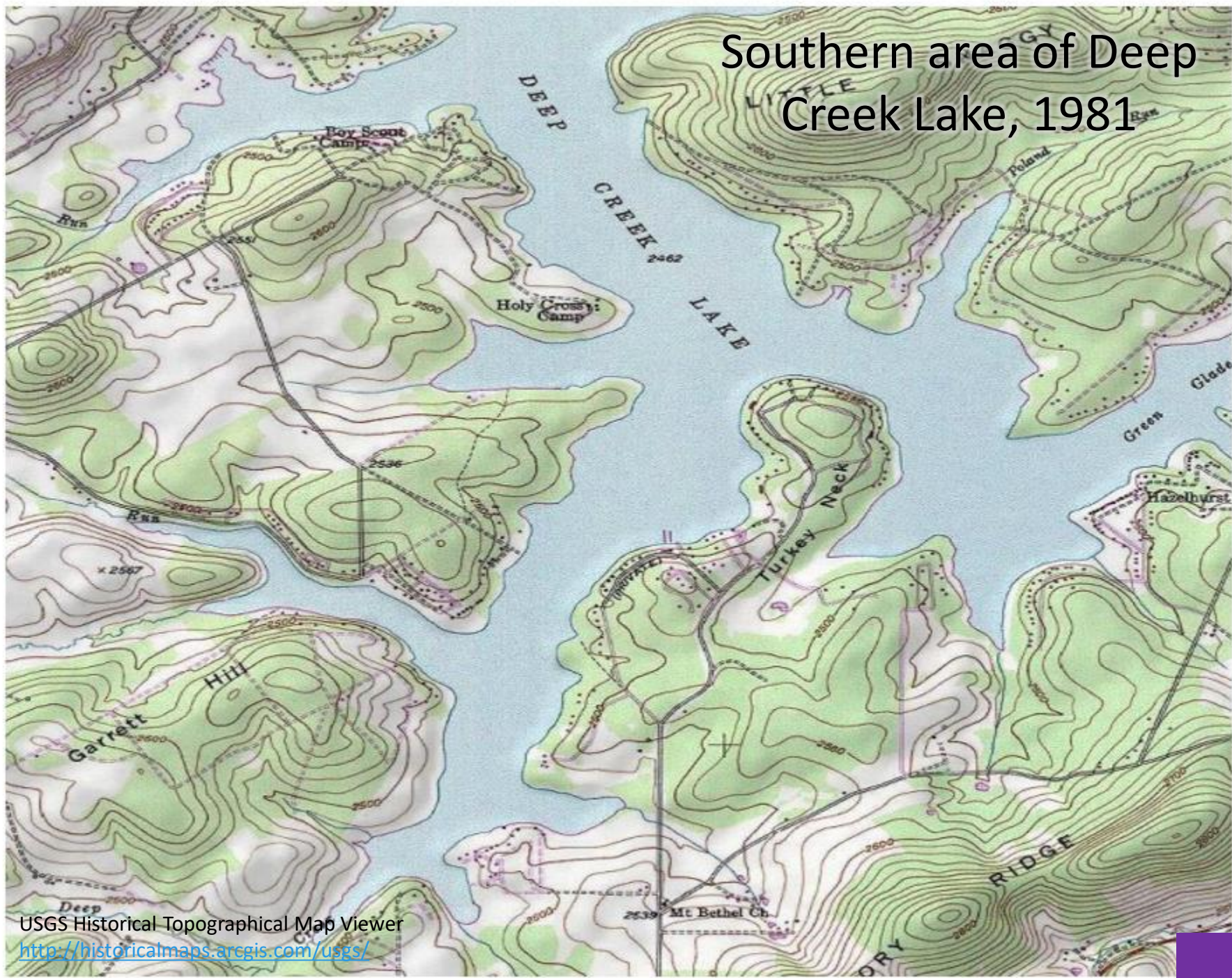
USGS Historical Topographical Map Viewer
<http://historicalmaps.arcgis.com/usgs/>

Southern area of Deep Creek Lake, 1974



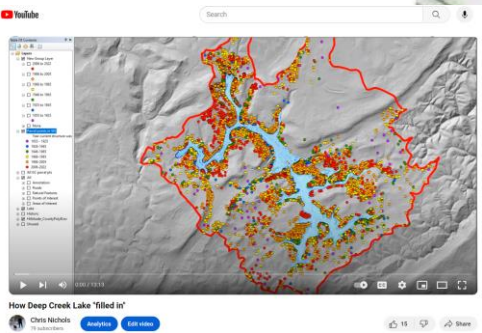
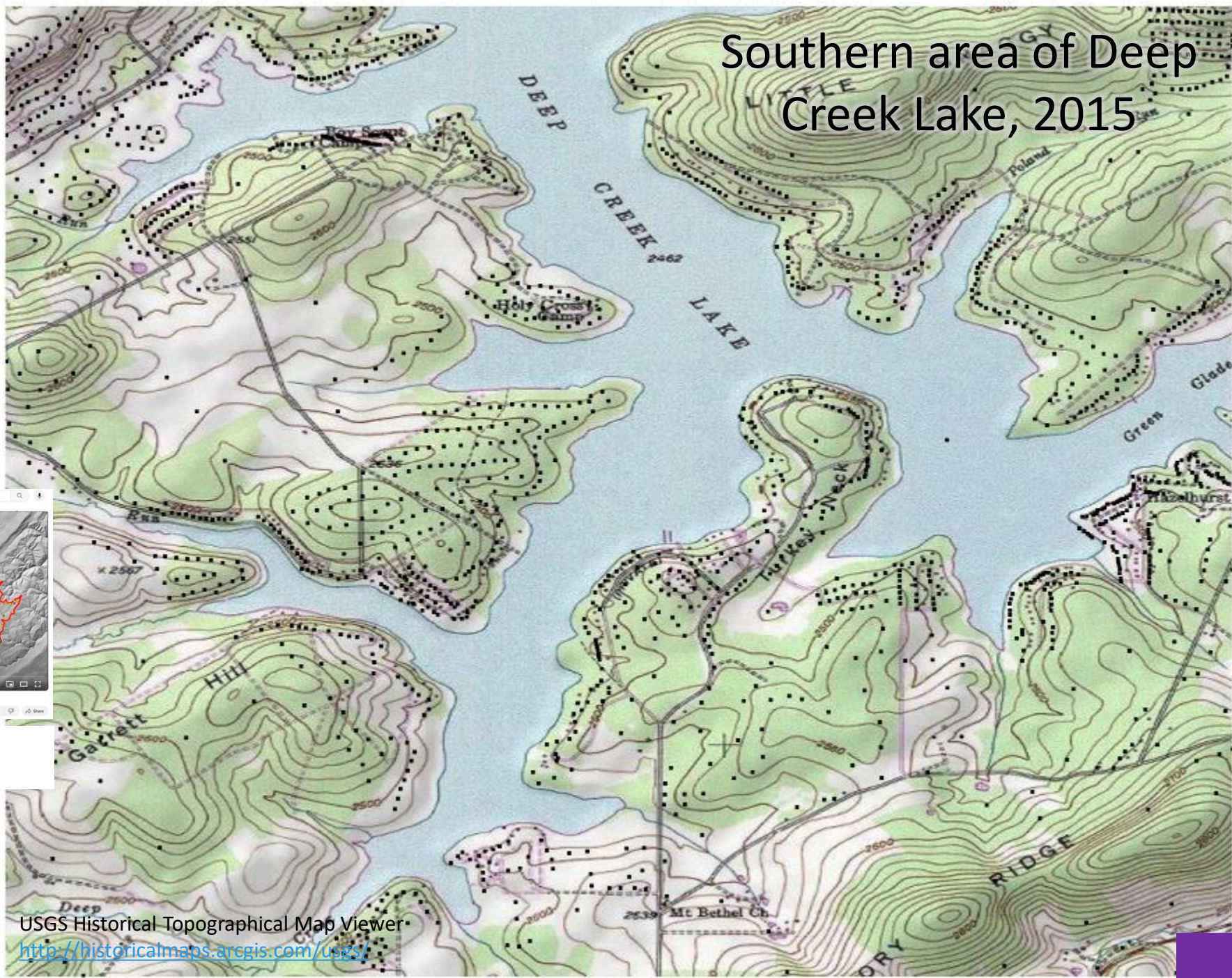
USGS Historical Topographical Map Viewer
<http://historicalmaps.arcgis.com/usgs/>

Southern area of Deep Creek Lake, 1981



USGS Historical Topographical Map Viewer
<http://historicalmaps.arcgis.com/usgs/>

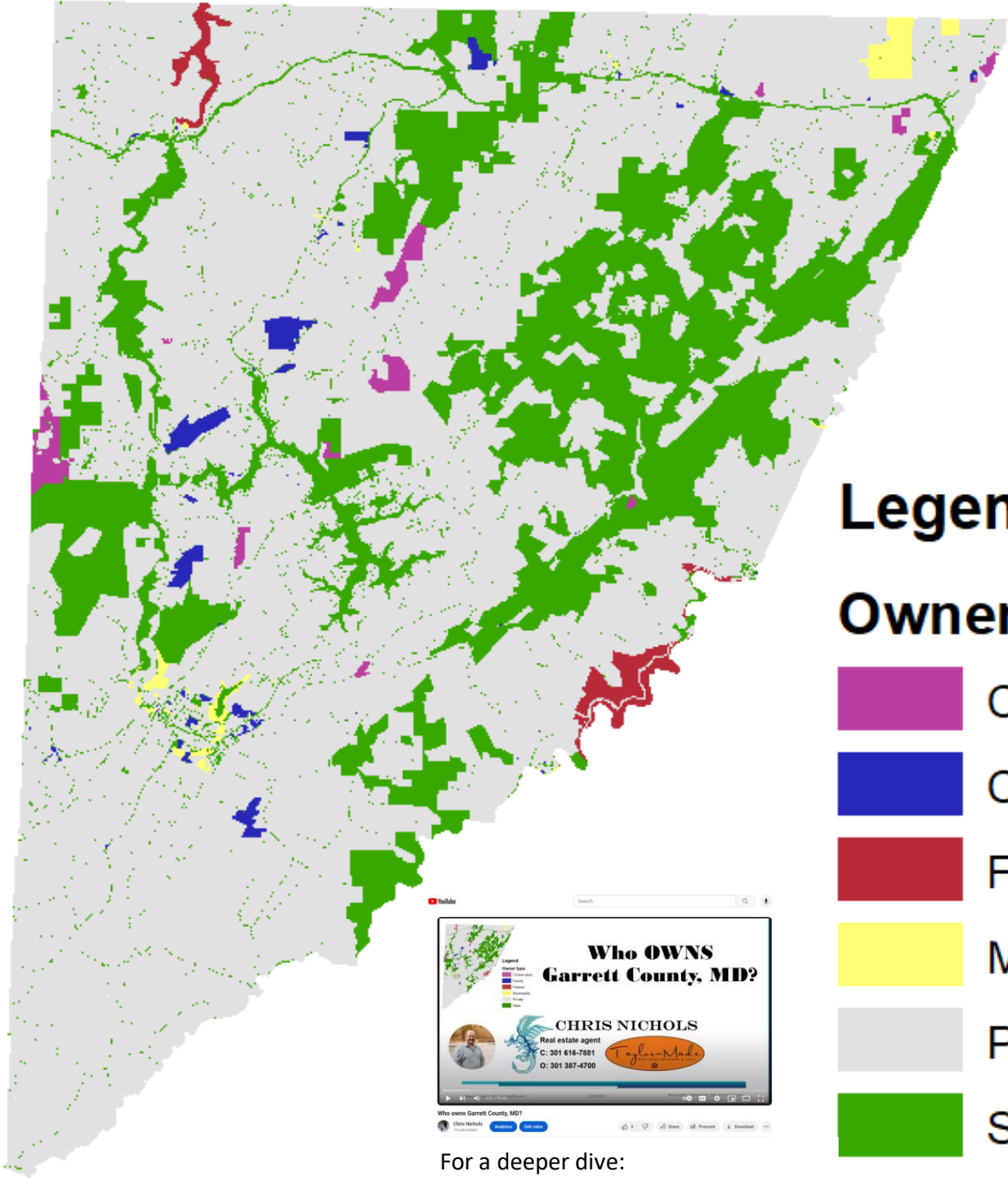
Southern area of Deep Creek Lake, 2015



For a deeper dive:
<https://youtu.be/Kit2NTB6ta8>

USGS Historical Topographical Map Viewer
<http://historicalmaps.arcgis.com/usgs/>

Current picture – who owns Garret County?



Legend

Owner type

- Conservation
- County
- Federal
- Municipality
- Private
- State

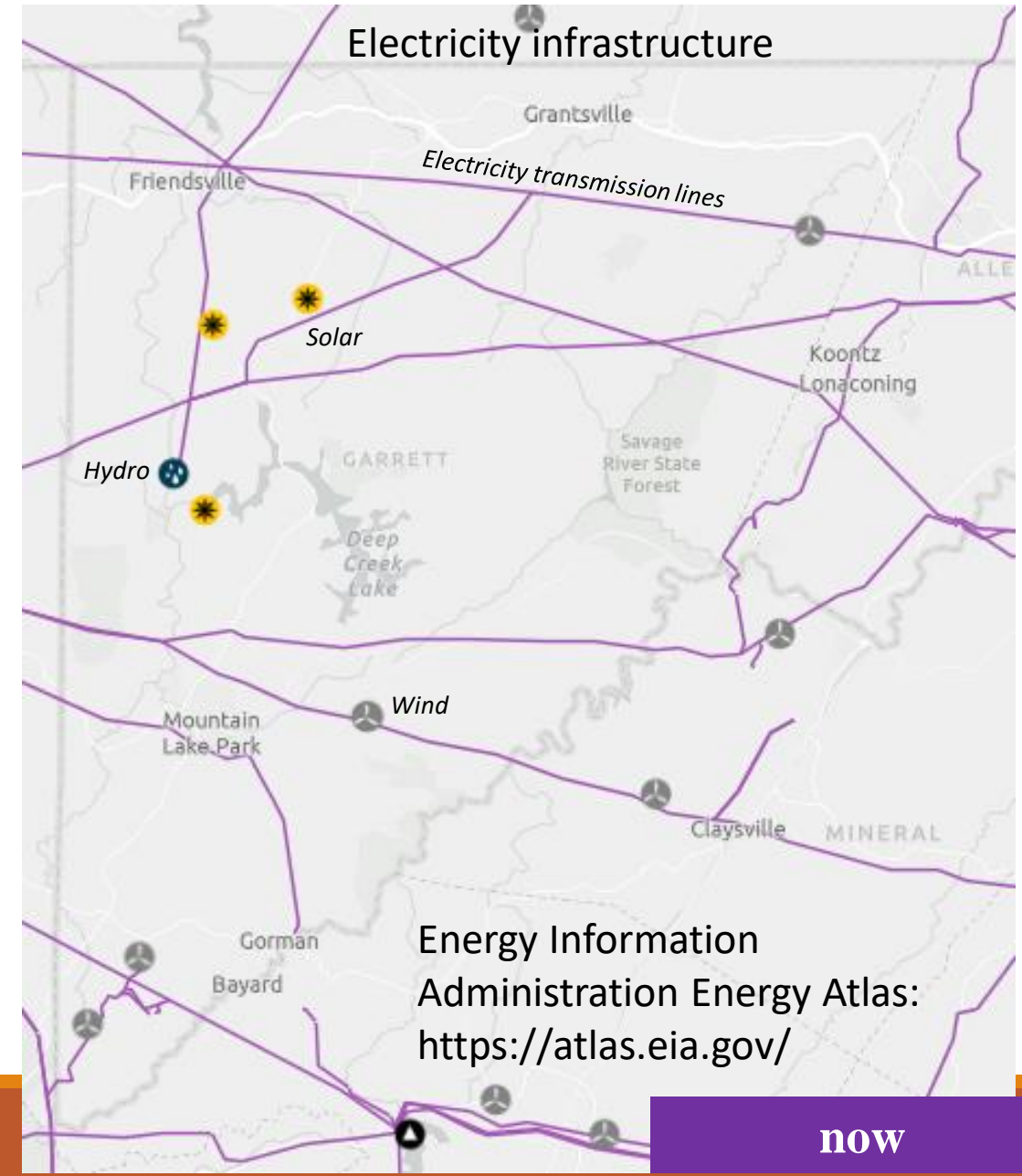
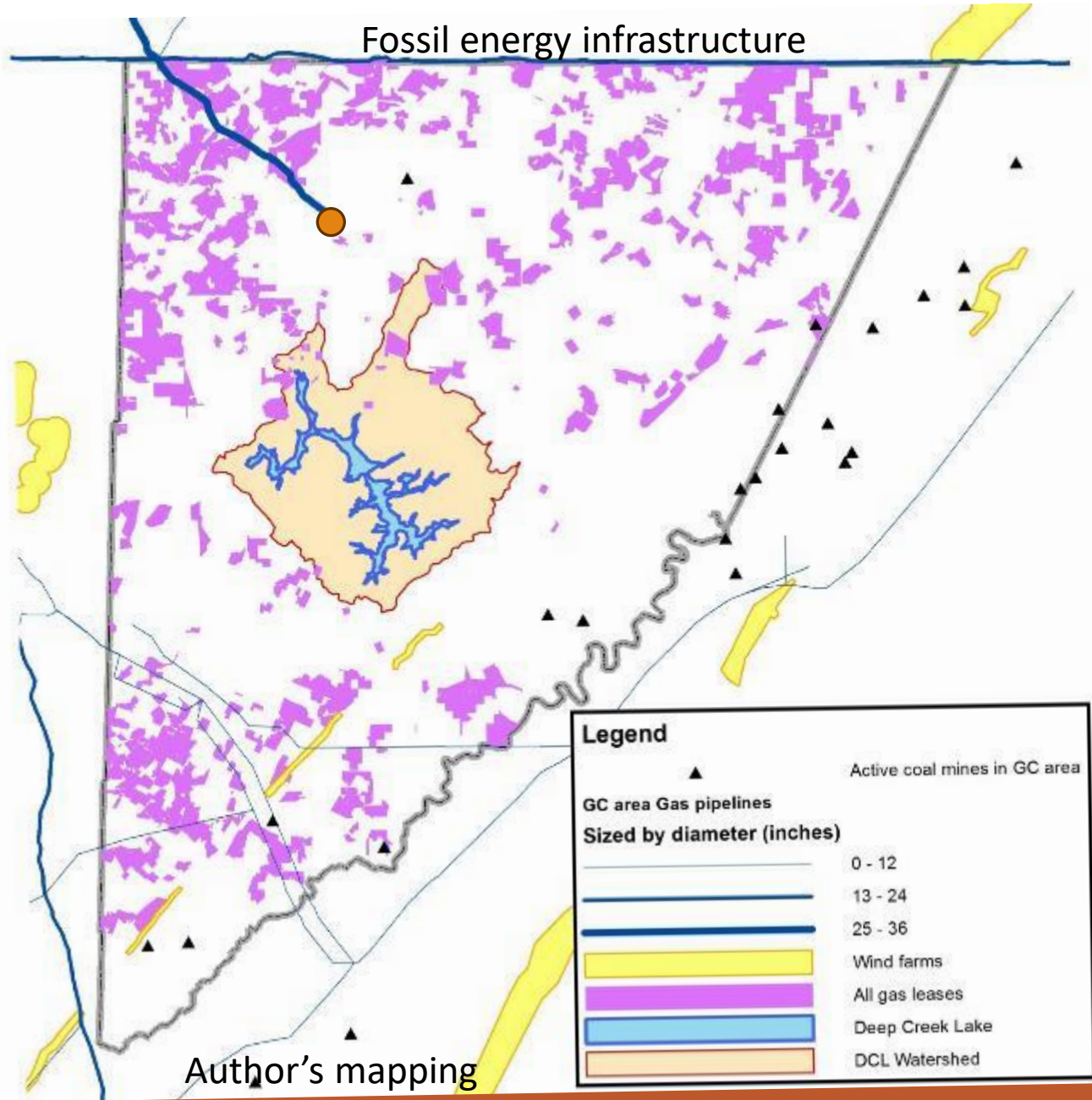


For a deeper dive:
<https://youtu.be/jVF3Lqh1sVo>

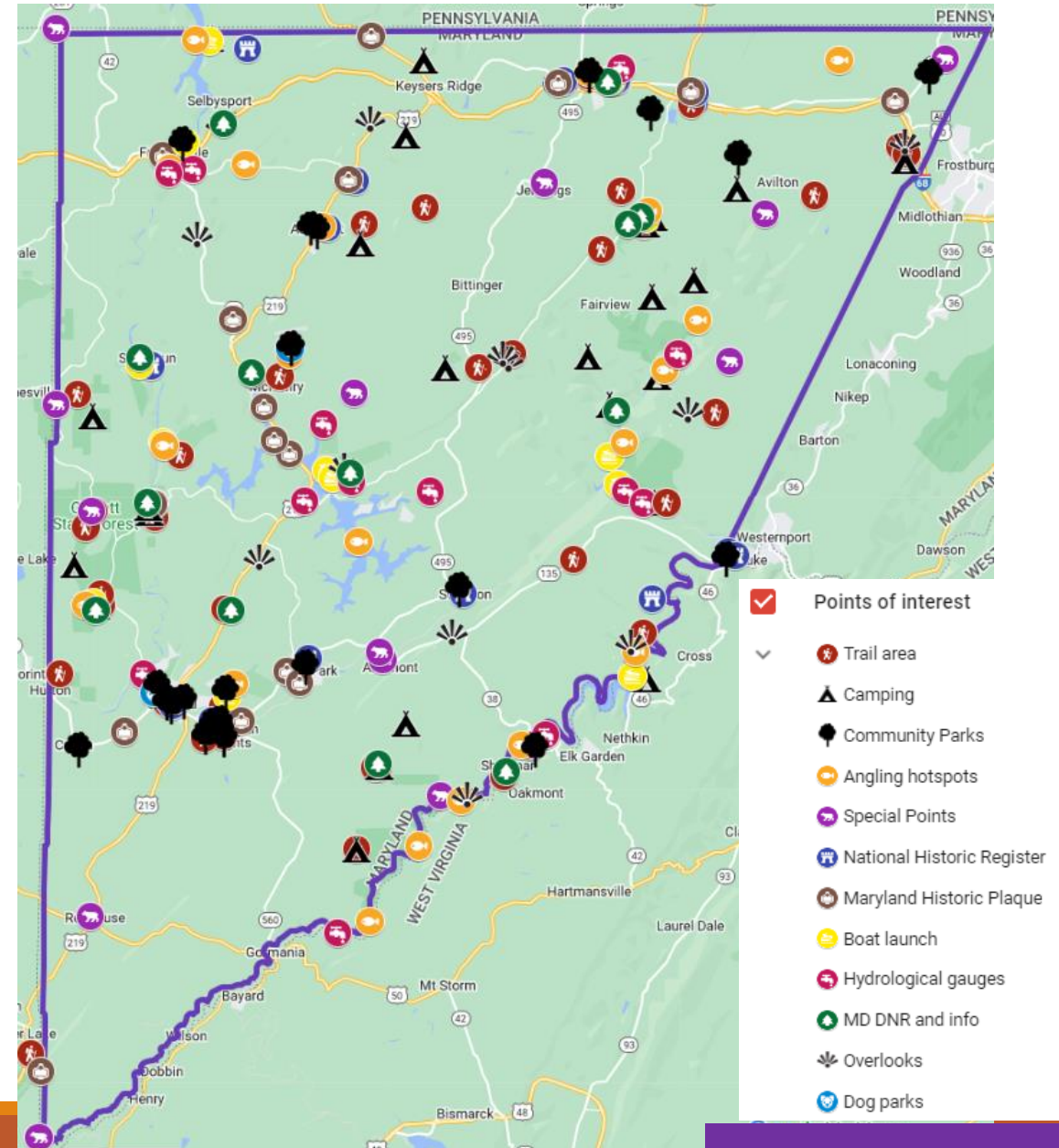
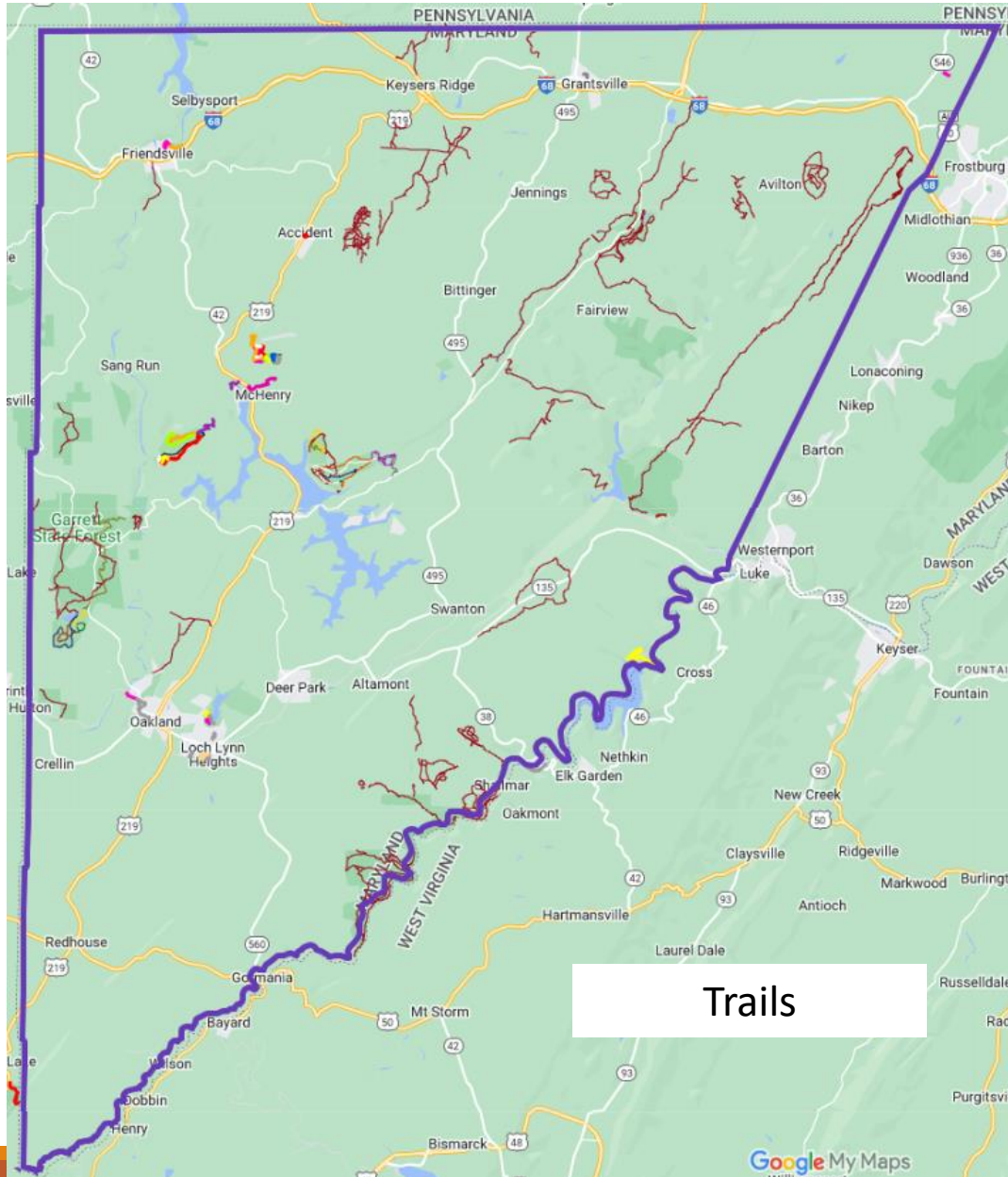
Owner type	Number of acres	Percent of total
Private	311,575	74.07%
State*	96,472	22.94%
Federal	3,514	0.84%
Conservation**	3,363	0.80%
County	3,235	0.77%
Municipality	2,465	0.59%
Grand Total	420,623	100.00%



Natural Resources- Energy crossroads



Rich with Natural (Recreation) Resources



Regional Rail-trail networks

Mon River and Decker's Creek Trails

Runs from N of Morgantown to S of Fairmont, with spur to Reedsville

Sheepskin Trail
Planned to connect to GAP

GAP + C&O Canal Trail
Connects DC to Pittsburgh (GAP alone estimated to drive \$120M in yearly economic activity)

Expansion plans are to Parkersburg to the west and Rowlesburg to south

Western Maryland Railroad – Georges Creek Line
Potential trail to parallel this new passenger line Westernport to Carlos

Allegheny Highlands Trail
Connects Parsons & Elkins (passable to Thomas)

West Virginia Mountain Railroad National Historic Trail
Friends of the Blackwater received a grant in 2022 to begin initiative to connect Elkins to the GAP via a WV-based route

Will we miss the train?



For a deeper dive:
<https://youtu.be/2a6aa6dB8s4>

Now (and tomorrow?)

Looking forward . . . while looking back

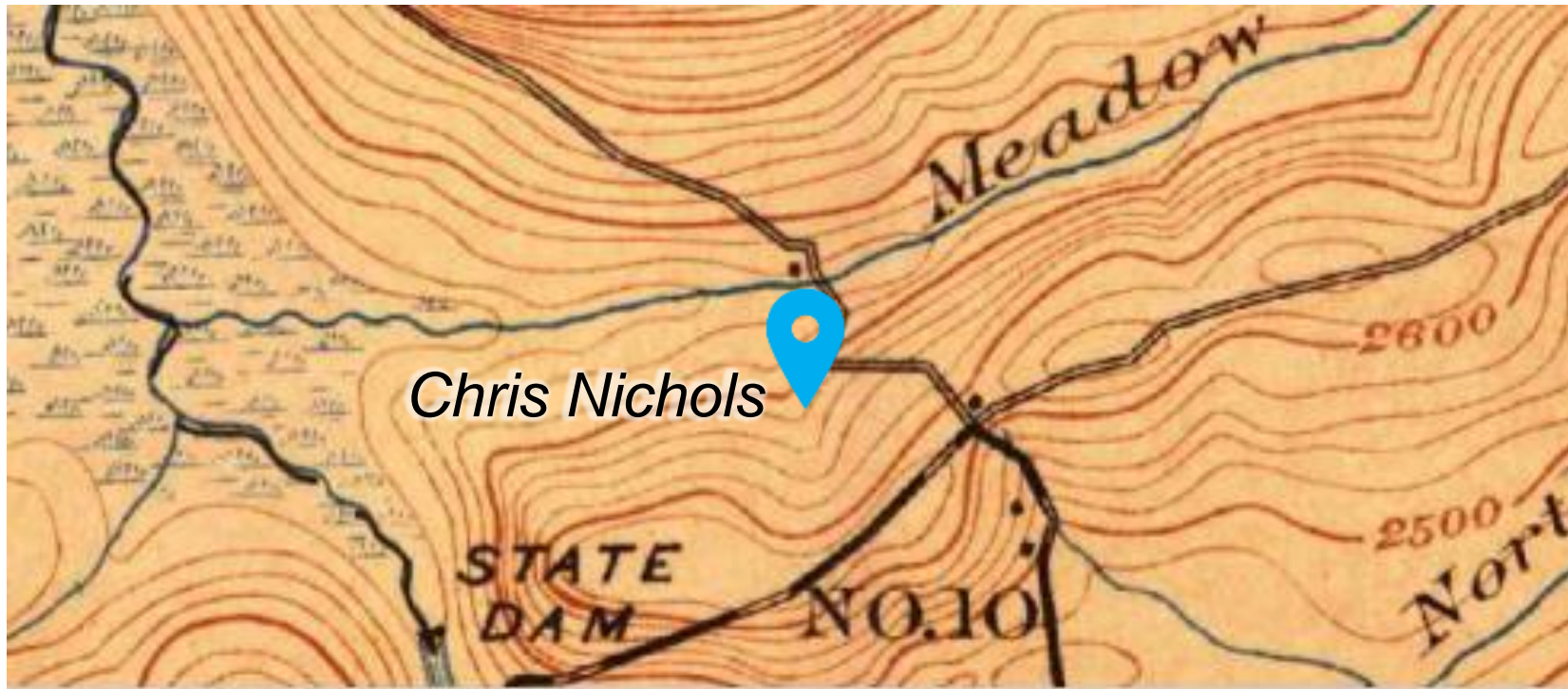


If you enjoyed this presentation, you should join the GCHS! Just \$25 per year and you'll help to support its mission to discover, promote and protect the history of Garrett County



<https://garrettcountymuseums.com/membership/>

Thank You!



For more information on my personal mapping and history projects: www.dimesy.com

This presentation can be downloaded with active links

To order my maps: narrowshill.com

To contact me: chris.nichols@dimesy.com

Map Resources Used in this Presentation

University of Maryland Map Collection

- <http://www.lib.umd.edu/mdmap>

Maryland Historical Society Map and Atlas Collection

- <http://www.mdhs.org/library/special-collections-maps-and-atlases>

Garrett County's Webmaps

- <https://maps.garrettcounty.org/arcgis/intro-map.php>

Western Maryland Historical Library

- <http://www.whilbr.org/garrettlots/index.aspx>

Garrett County Historical Society

- In person!
- And online: <https://garrettcountymuseums.com/virtual-map-room/>

University of Alabama

- http://alabamamaps.ua.edu/historicalmaps/us_states/maryland/

Johns Hopkins Sheridan Library

- <https://jscholarship.library.jhu.edu/handle/1774.2/32751>

USGS Historical Topographical Map Viewer

- <http://historicalmaps.arcgis.com/usgs/>

David Rumsey Map Collection-Cartography Associates

- <http://www.davidrumsey.com/view/luna>

Overlays of the lake with historic maps

- <http://www.dimesy.com/Mapping-and-GIS-Resources.html>